

Johann Kuhnau (1660 - 1722): Bone Jesu, care Jesu

BONE JESU.
care Jesu ne me tu desere etc.
a 3.
2 Violini.
Canto solo.
Continuo a Doppio.
di
Giovanni Kuhnau.

Dom. 13. Trinit. 1690.

V. 55

Mus. 2133-E-500

Canto Solo.

B *me Jesu, care Jesu,*
bone Jesu care Jesu, ne me tu de-
sero, bone Je-
su, d' d' dulcis Jesu, d' d' dulcis Jesu.
lanqueo, pro se, mi Je- su pro se, mi Je-
su lanqueo moriar lan- queo mo- ri-
ar pro se, mi Je- su, moriar pro se, mi Je- su.
Amore lan- queo pro se, mi Je- su, amo- re lanqueo
pro se, mi Je- su, amore, amore pro se, pro se, pro se, mi
Je- su. Bone Jesu. Amen. "gi"
ris, surgite, de mon- "tibus accur"
"rite de mon- tibus accur" - "rite o filia"

Organo.

B *me Jesu etc.*
Bone Jesu etc.

Violino I

B *me Jesu etc.*
Bone Jesu etc.

KUHNAU

Bone Jesu, chare Jesu,
ne me tu desero

à 3

2 Violini

Canto solo

e Continuo à doppio

di Giovanni Kuhnau

Bone Jesu, chare Jesu, ne me tu desero

Johann Kuhnau
(1660-1722)

Sinfonia

Violino 1

Violino 2

Canto Solo

Organo

6 7 6 # 7 7 7 6

6 5 5 6 7 6 5 3 7 6 5 #

11 Bone Jesu

Bo - ne Je - su, bo - ne Je - su,

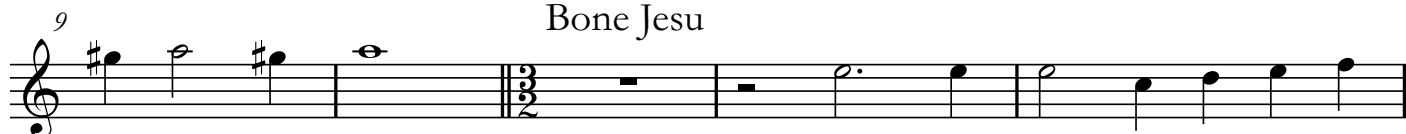
Bone Jesu, chare Jesu, ne me tu desero

Johann Kuhnau
(1660-1722)

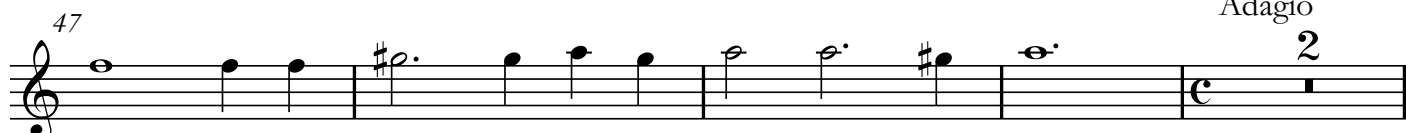
Sinfonia



Bone Jesu



Adagio



Johann
SCHELLE

(1648–1701)

Gott, sei mir gnädig

Full Score

Edited by
Adriána Kalafszky

The logo for Orfeo Music Foundation, featuring the word "Orfeo" in a stylized, cursive script.

Gott, sei mir gnädig

Psalm 51, 3-21

Johann Schelle

(1648-1701)

I. Sinfonia

Clarino

Violino I

Violino II

Viola I

Viola II

Fagotto

Continuo

6 6 b # 6 6

8

5 b b 5 5b b 7 # 6b 5 # 6 4 b 5 #

2. Gott, sei mir gnädig

Clarino

Violino I

Violino II

Viola I

Viola II

Fagotto

Canto
Gott, sei mir gnä - - - - dig Gott

Alto
Gott, sei mir gnä - - - - dig

Organo

Continuo

2 5 6 6^b 5
4 #

5

— sei mir gnä - dig nach dei - ner Gü - te und til - ge mei - ne

Gott sei mir gnä - dig nach dei - ner Gü - te und

6^b 6 # 6 b 6^b 5^b 5 6