



VÁRVÖLGY ÉS KÖRNYÉKE
tus, akvarell 700x700 mm
2004



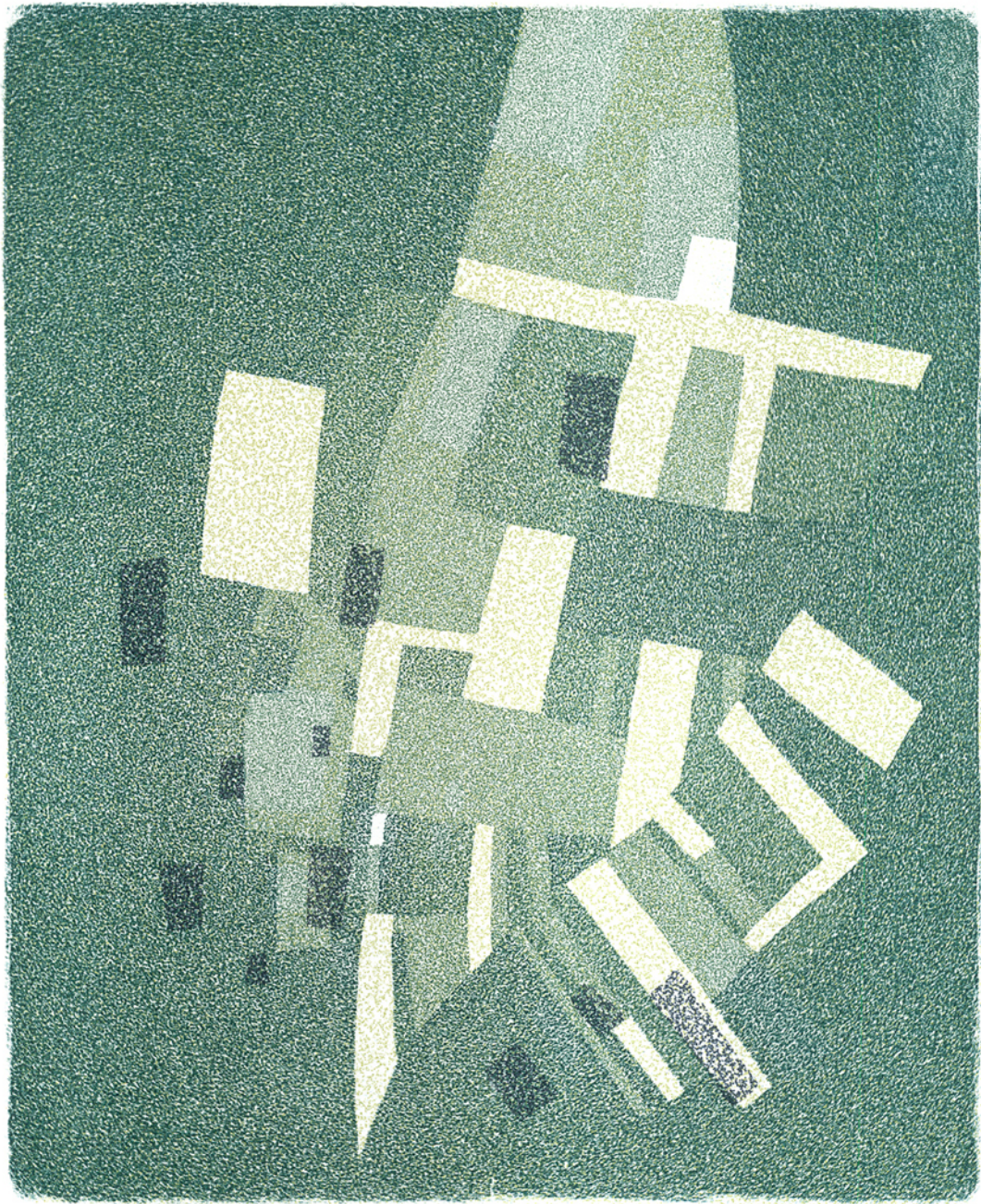
A BALATON ÉS A DÉLI-BAKONY
 tus, akvarell, 700x1000 mm
 2003



ROVINJ
 tus, akvarell, 700x1000 mm
 2005



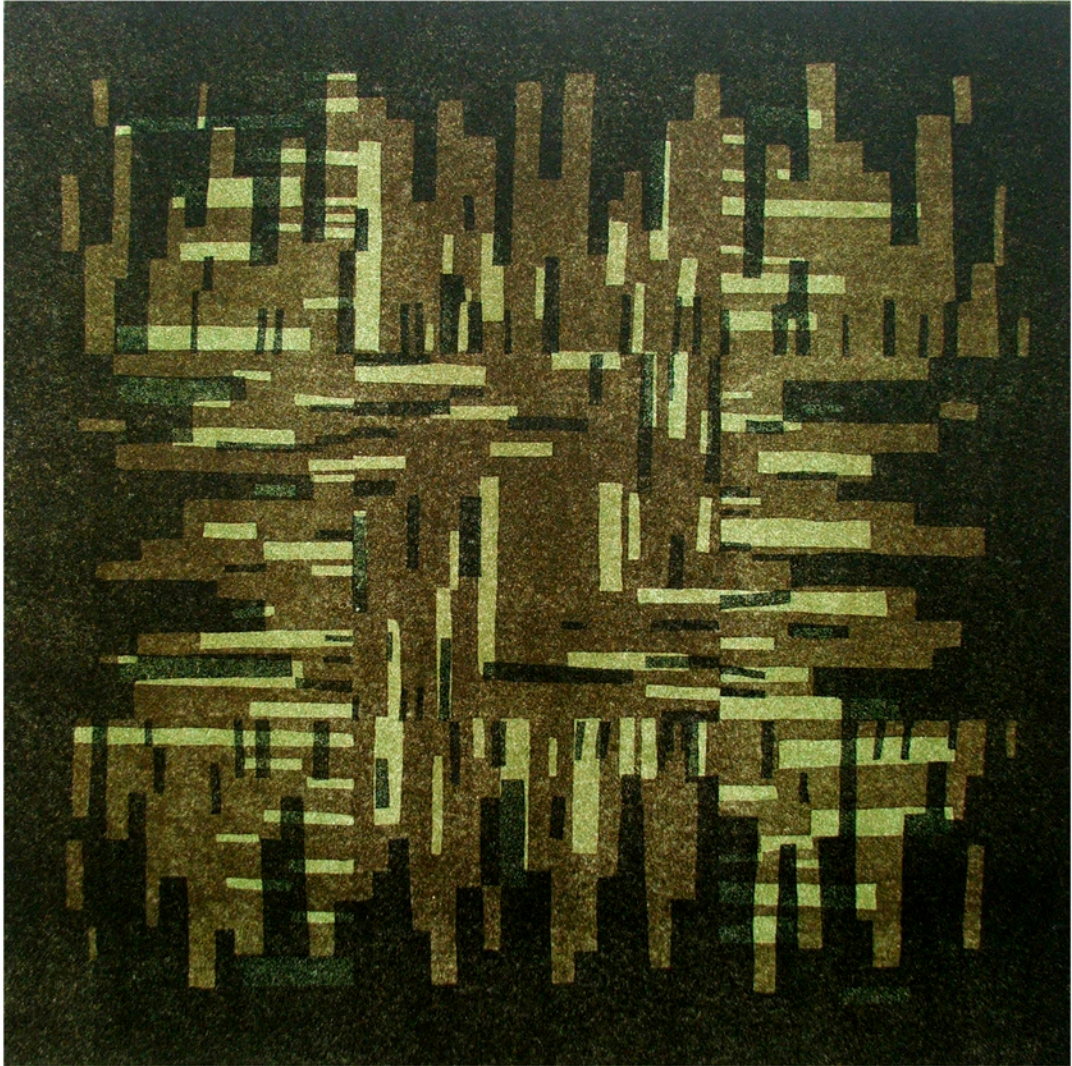
AGRÁRSTRUKTÚRA - BALATONENDRÉD
litográfia, 460x670 mm
2004



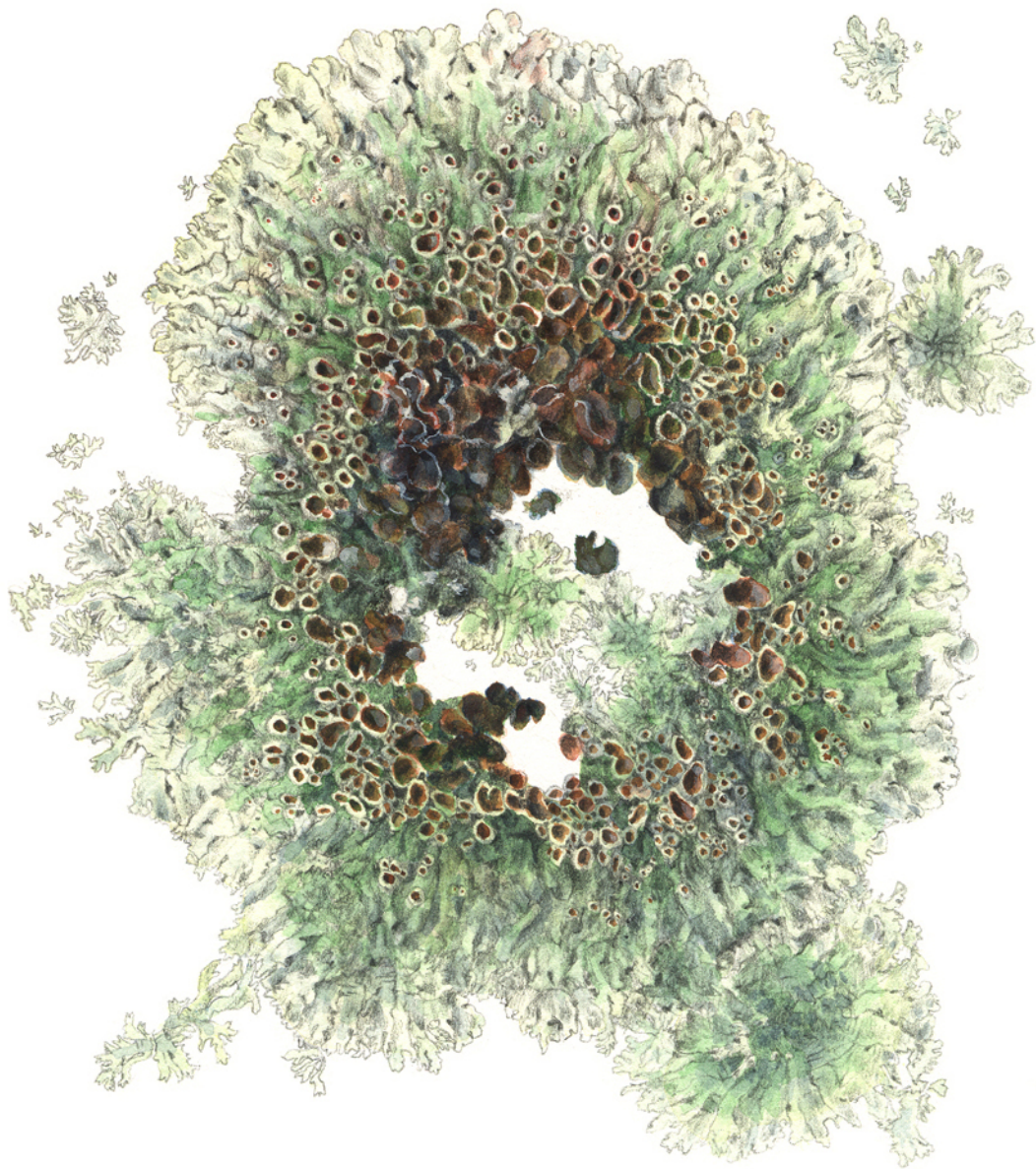
AGRARIUM 4.
litográfia, 160x195 mm
2006



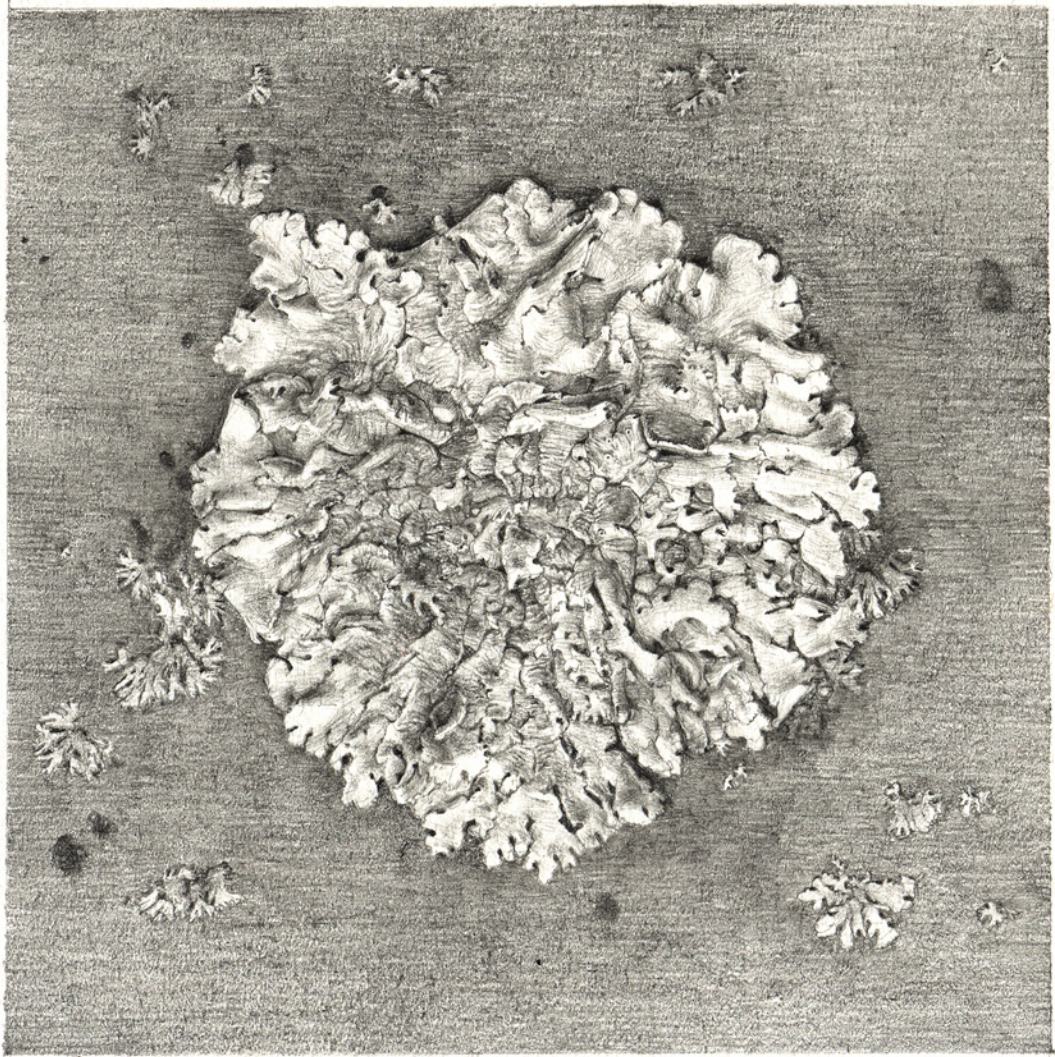
KRONOLÓGIAI TANULMÁNY V.
akvatinta, 200x200 mm
2007



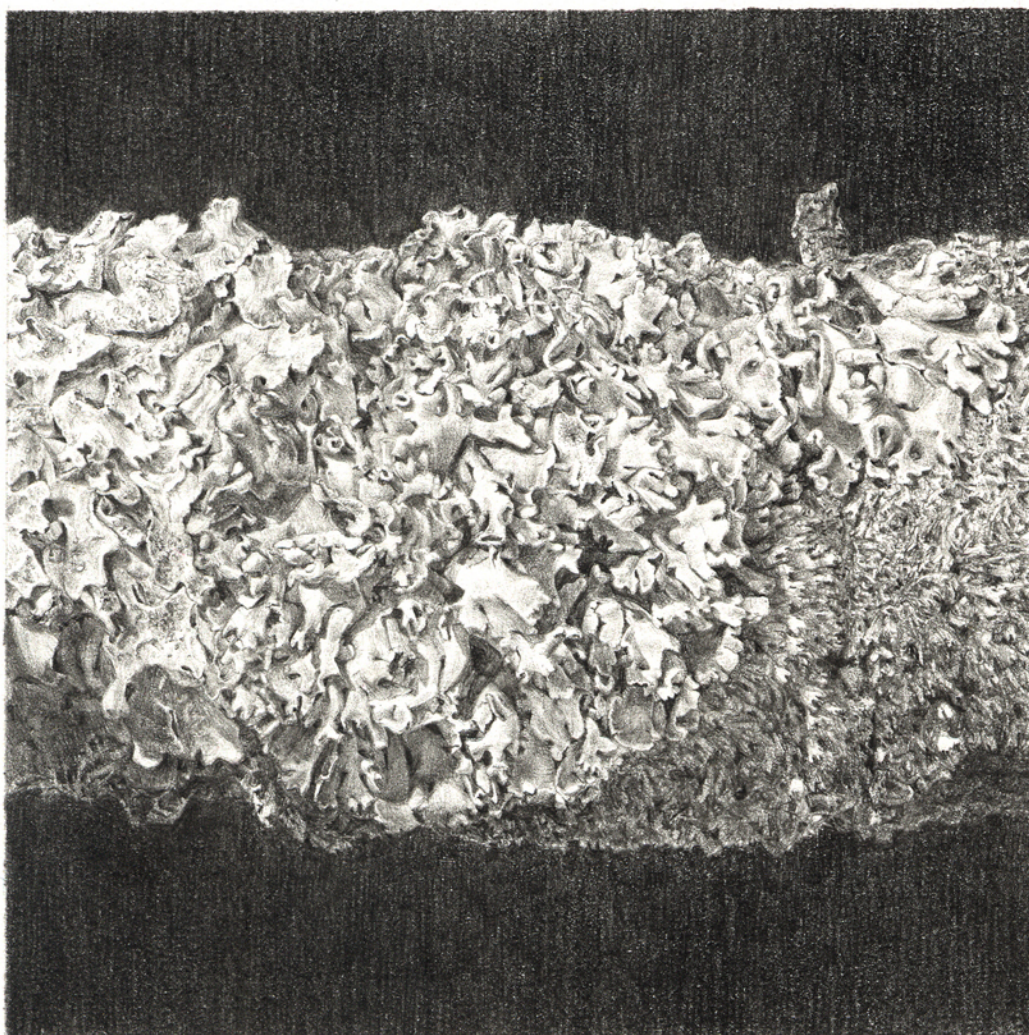
HATÁSTANULMÁNY IX.
litográfia, 400x400 mm
2008



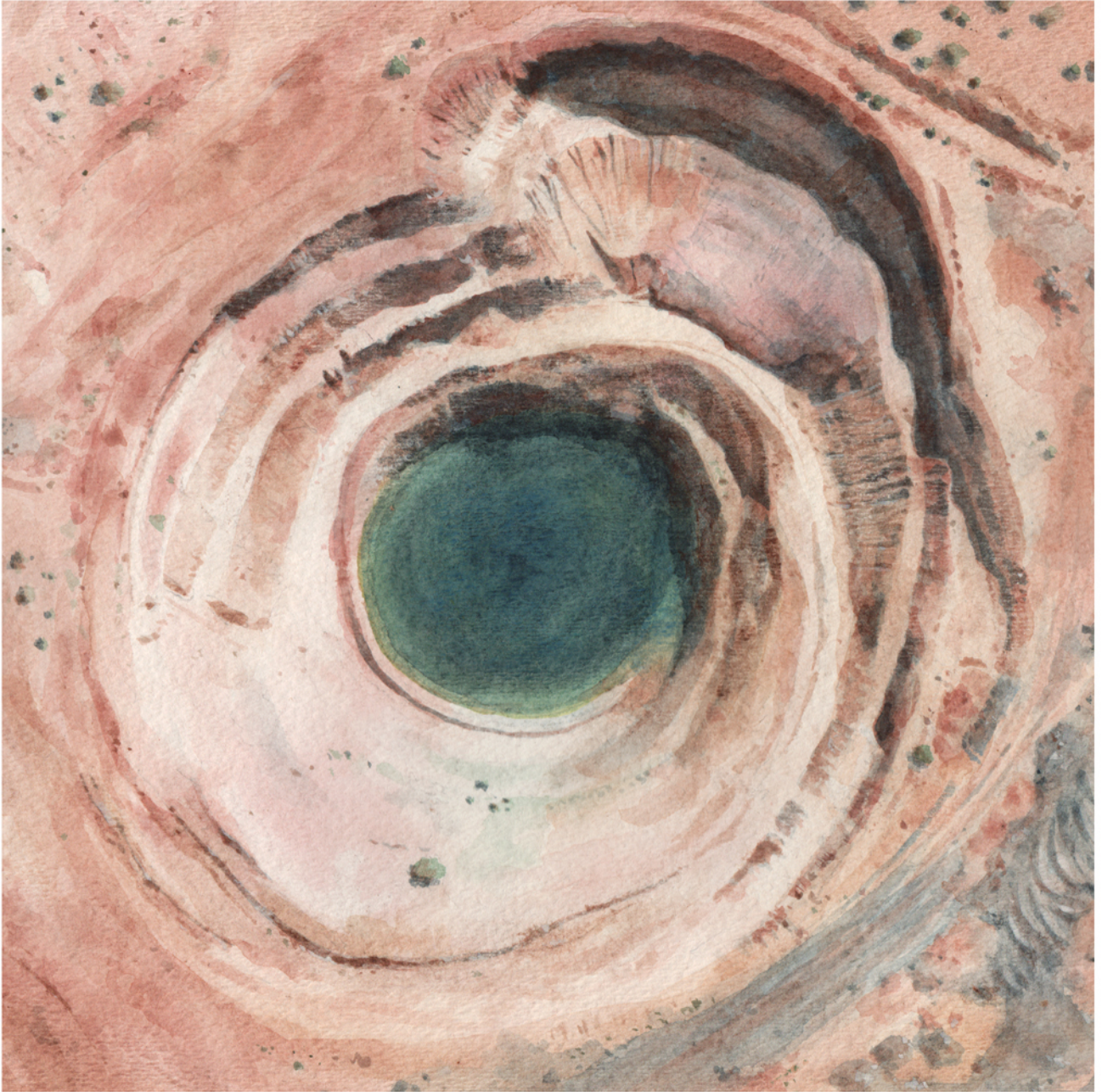
PARMELIA CONSPERSA
akvarell, színes ceruza 140x160 mm
2010



PARMELIA CONSPERSA
grafitceruza, 110x110 mm
2010



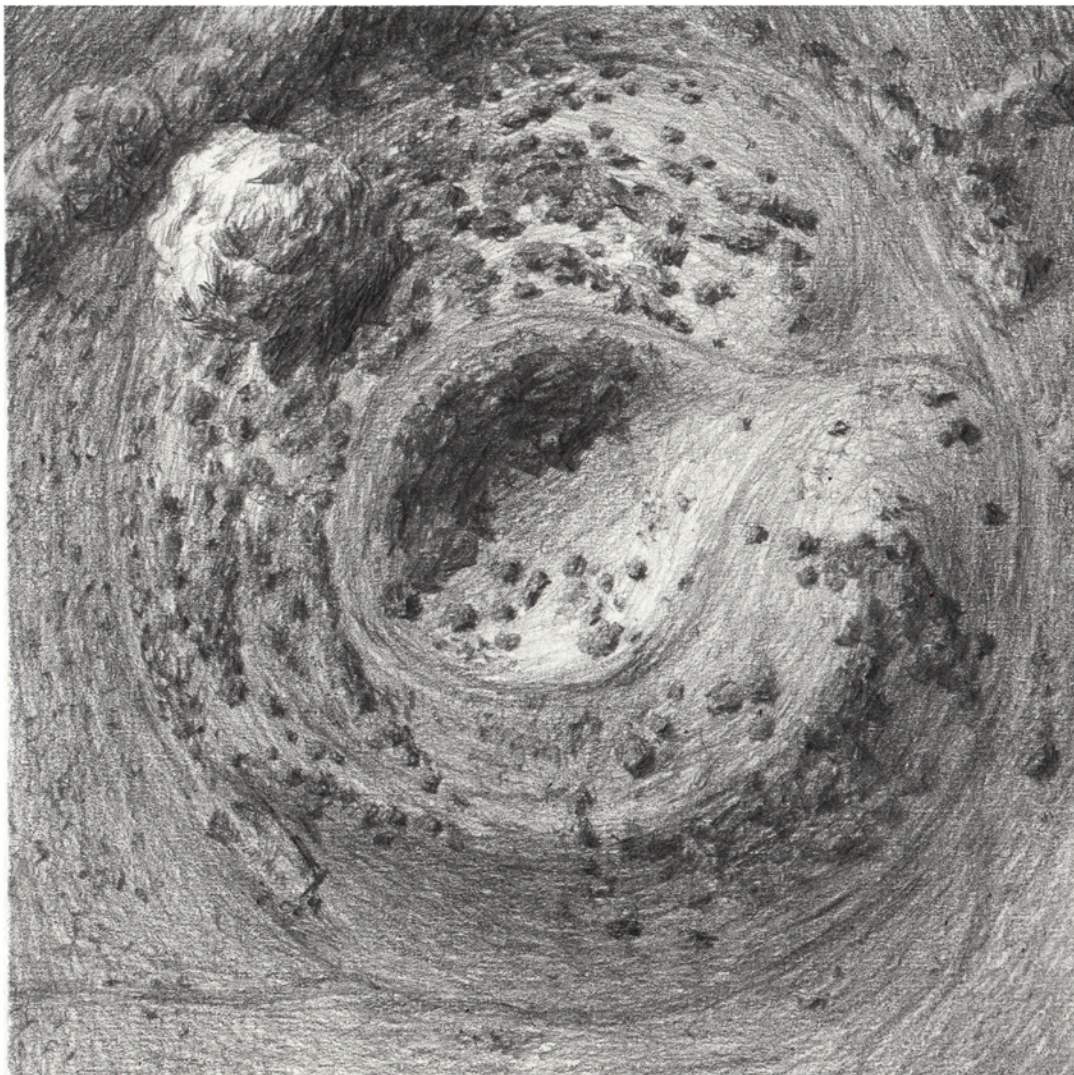
ZUZMÓK FAÁGON
grafitceruza, 110x110 mm
2011



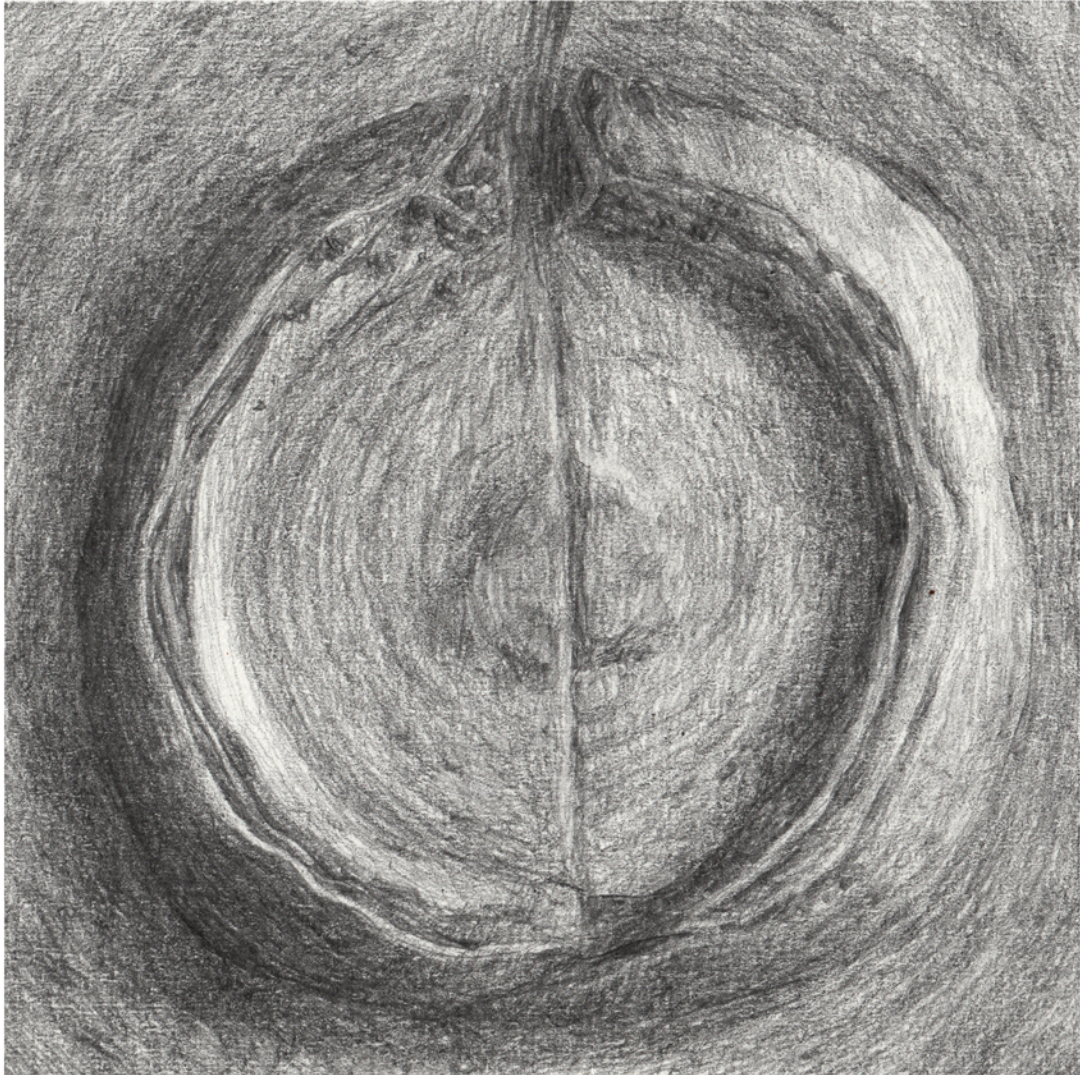
MOTÍVUM I. - KÜLSZÍNI FEJTÉS AUSZTRÁLIÁBAN
akvarell, 250x250 mm
2018



MOTÍVUM II - BARRINGER-KRÁTER
akvarell, 250x250 mm
2018



MOTÍVUM IV - DOWTH-I HALOMSÍR
grafitceruza, 150x150 mm
2019



MOTÍVUM V - LEMBECKSBURGI ERŐD
grafitceruza, 150x150 mm
2019